

Catalogue number: **LS80035-□□TF-SS**

800A 3 Phase Single Sided MCCB Chassis

eureka

TOBIN
ELECTRICAL COMPONENTS



800A 3 Phase Single Sided MCCB Chassis

- Current Rating: 800A
- Insulated Busbar
- IP Rating: IP2X
- Current withstand Rating 800A: 50kA 0.1s
- Available in bottom feed (BF) or dual feed (DF)
- Use of EUR-SS800-MCCB-TOP/BOT brackets to lift chassis to meet escutcheon.
- Standards: IEC 61439-2

LS80035-

□□TF-SS

Number of Poles	
3	3 Pole
6	6 Pole
9	9 Pole
12	12 Pole
15	15 Pole
18	18 Pole
21	21 Pole
24	24 Pole
30	30 Pole
36	36 Pole

Properties

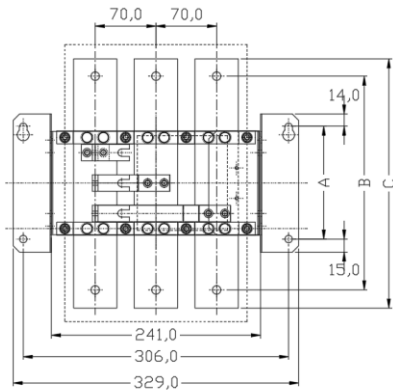
Properties			
Manufacturer		Eureka	
Product Range		Eureka 800A Single Sided MCCB Chassis	
Chassis Type		800A Insulated busbar Chassis	
Compatible Product Series		LS MCCB's : TS100, TS160, TS250	
IP Rating		IP2X	
Busbar Thickness		6.3mm Cu	
Pitch		35mm	
Rated Current	In	800A	
Rated Operating Voltage	Un	415V	
Rated Insulation Voltage	Ui	690V	
Rated Frequency		50/60Hz	
Rated Short-time withstand Current	Icw	0.1s	50kA
Rated peak withstand Current main Busbar		Ipk	105 kA
Rated Diversity Factor		0.8	
Standards Compliance		AS/NZS 61439-2	

Catalogue number: **LS80035-□□TF-SS**

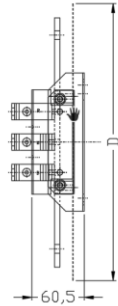
800A 3 Phase Single Sided MCCB Chassis



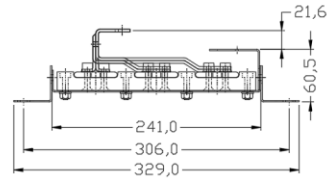
Dimensions for LS80035-□□TF-SS



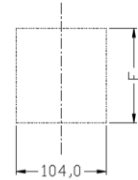
CHASSIS FRONT ELEVATION



CHASSIS SIDE VIEW



CHASSIS BOTTOM VIEW



ESCUTCHEON CUTOUTS

Part No.	A	B	C	D	E
LS80035-3TF-SS	130	246	287	319	109
LS80035-6TF-SS	235	351	392	424	214
LS80035-9TF-SS	340	456	497	529	319
LS80035-12TF-SS	445	561	602	634	424
LS80035-15TF-SS	550	666	707	739	529
LS80035-18TF-SS	655	771	812	844	634
LS80035-21TF-SS	760	876	917	949	739
LS80035-24TF-SS	865	981	1022	1054	844
LS80035-30TF-SS	1075	1191	1232	1264	1054
LS80035-36TF-SS	1285	1401	1442	1474	1264