



Certificate Product



FLOAT SWITCH

- No mercury: electromechanical principle for controlling
- Reversible contact: It allows the control with lower and upper level
- Type of interruption: micro-disconnection
- Degree of Protection: IPX8
- Electrical capacity: 10(4)A 250V~
- Operation temperature: Maximum of 60°C

SPECIFICATIONS

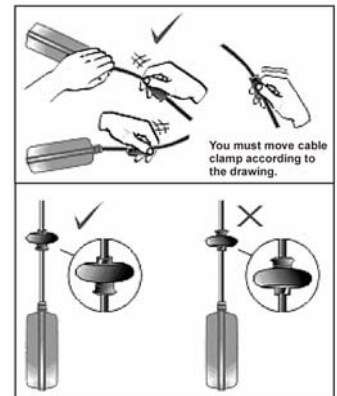
The drawing to the side indicates how the fixation of the counterweight should be made.

To increase the differential between maximum or minimum level, you have to increase the cable distance between the float and the counterweight.

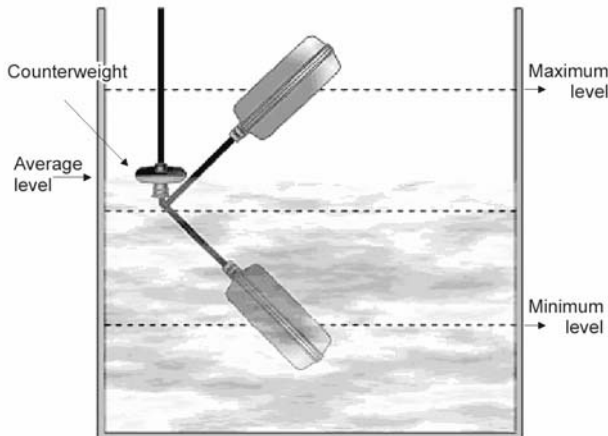
It is not advisable to use this float switch in flammable liquids.

There should not be any connections made, where contact with the liquid is possible.

Fasten the float cable to the border or to the upper side of the tank.

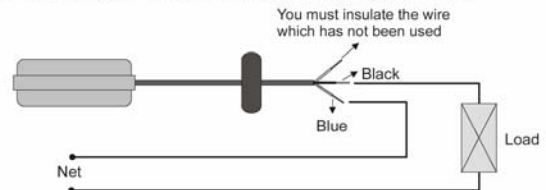


UTILISATION

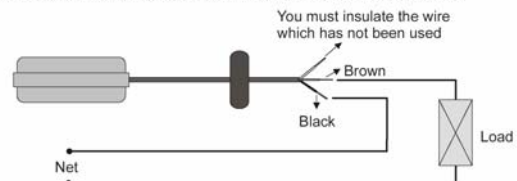


WIRING

Control of upper level: turns off in the superior limit



Control of lower level: turns off in the inferior limit



- Part No: **CB-2005** 5mtr neoprene cable
- CB-2010** 10mtr neoprene cable
- CB-2020** 20mtr neoprene cable

Note : Other lengths available on indent

DIMENSIONS

